



# Bayfield North (North Gullies) WATERSHED REPORT CARD

**Forest Conditions**

**Grade:**  
**B**

**Wetland Cover**

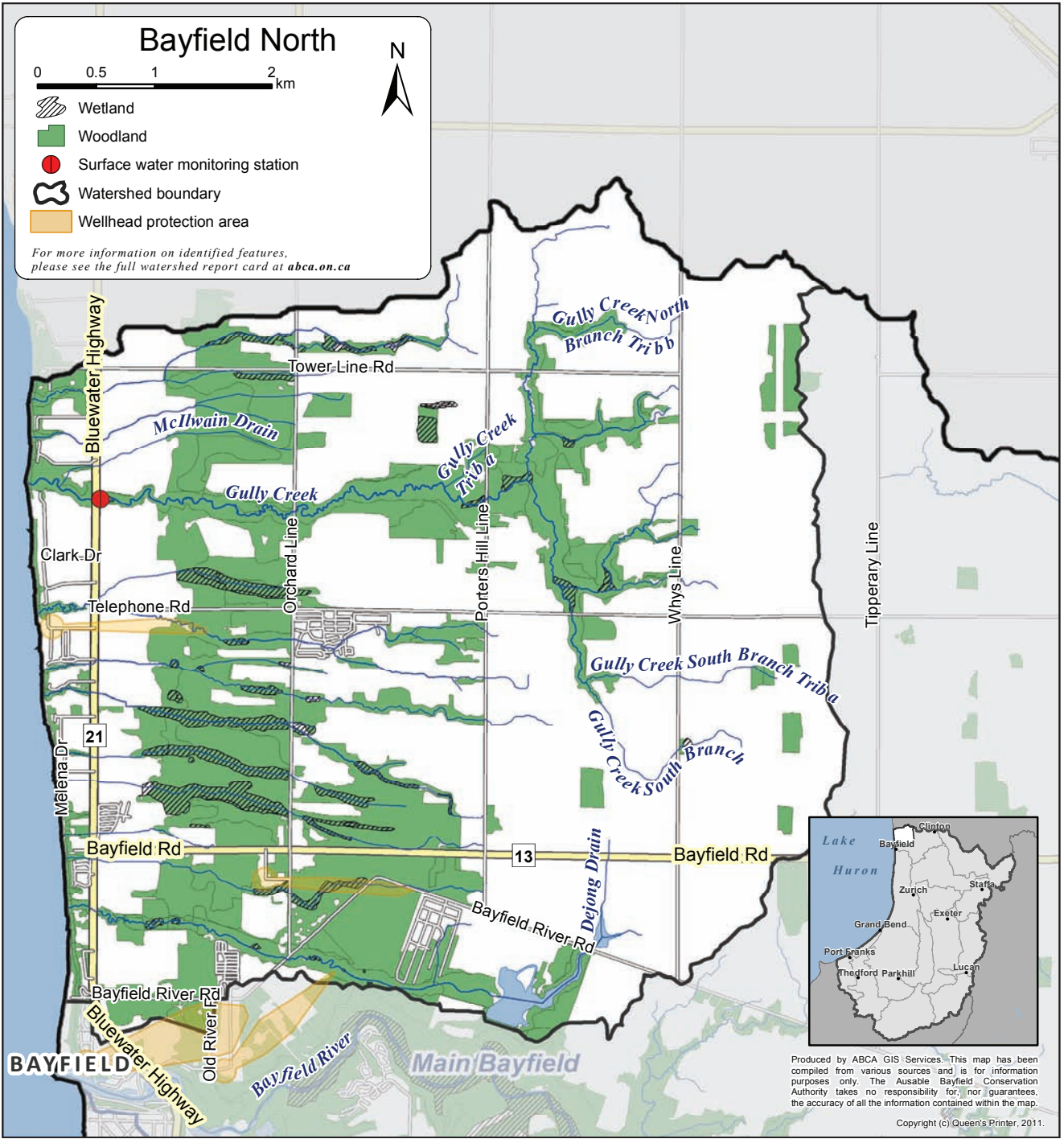
**Grade:**  
**D**

**Surface Water Quality**

**Grade:**  
**C**

**Grading**

A	Excellent
B	Good
C	Fair
D	Poor
F	Very Poor



## Top action needed to enhance this watershed:

Undertake environmental actions identified through individual property plans.

For other recommended actions, see back page.

The standards used in this report card were developed by conservation authorities to ensure consistent reporting across the province of Ontario and are intended to provide watershed residents with information to protect, enhance, and improve the precious resources that surround us.



# Watershed Features

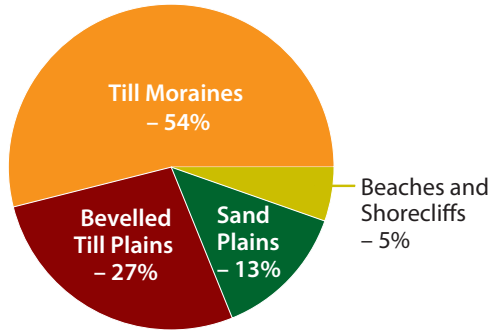
**Area:** 40 km<sup>2</sup>

**Municipalities:** Central Huron

Watershed features, such as geology, soil type, and land use, help explain forest conditions and the quality of groundwater and surface water.\*

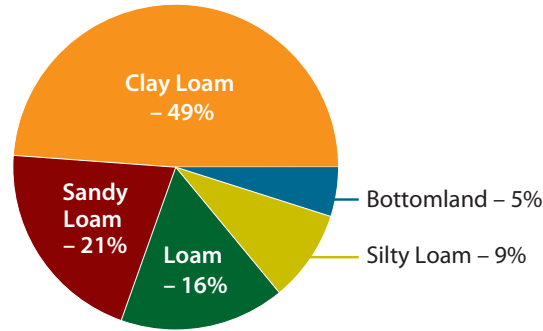
## Geology

*Chapman and Putnam  
1984*



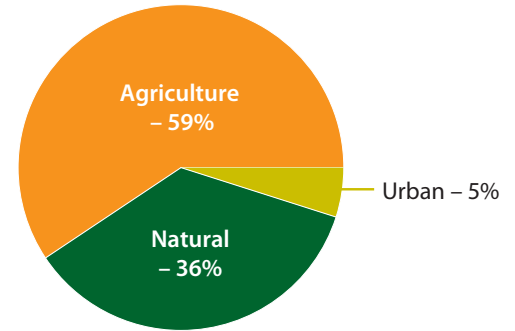
## Soils

*County Soils Maps  
1951–1991*



## Land Use

*Ontario Ministry of Agriculture,  
Food and Rural Affairs 2010*



## Fish:

- There is a cold-water fishery in Gully Creek. This is important habitat for fish species at risk.

## Species at Risk:

- One bird, three reptile, two fish, and one plant species at risk in this watershed.\*



## Other Watershed Residents

Damselflies eat flying insects, especially mosquitoes. You can help to sustain healthy populations of damselflies by creating or maintaining streamside vegetation.

# Watershed Monitoring

Ausable Bayfield Conservation monitors watershed conditions. Look for a dial graphic like this one at [abca.on.ca](http://abca.on.ca) for low-water advisories and flood messages.



For some data collection needs, especially rainfall amounts, local residents are encouraged to help monitor the watershed.

Other monitoring opportunities may exist. Call us if you're interested at **519-235-2610** or toll-free at **1-888-286-2610**.

## Groundwater Quality



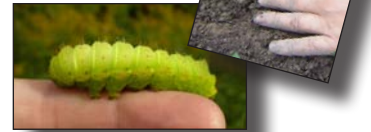
- Although a provincial water quality monitoring well does not exist in this watershed, water quality may be similar to water in the aquifer found in the South Gullies watershed. Concentrations of nitrate and chloride are better than the drinking water standard for nitrate and guideline for chloride at the deep provincial monitoring well located in that watershed.
- No grade was assigned at the watershed level because groundwater boundaries differ from surface water boundaries.
- Different types of aquifers exist throughout the region and the quality of your well water may vary from that of the provincial monitoring wells.\*

\* See the complete *Watershed Report Card* at [abca.on.ca](http://abca.on.ca) for more information.

# Forest Conditions and Water Quality



## Forest Conditions



Indicator	Description	Result		2012 Grade	
		2007	2012	Bayfield North	Entire ABCA Area
<b>Forest cover</b>	<ul style="list-style-type: none"> <li>Forest cover is the percentage of a watershed that is forested.</li> <li>An A grade is forest covering more than 35% of a watershed.</li> </ul>	27.7%	30.0%	B	D (14.1%)
<b>Forest interior</b>	<ul style="list-style-type: none"> <li>Forest interior is the percentage of a watershed with forest cover that is at least 100 metres from the forest's edge.</li> <li>Some birds need this area to nest and breed.</li> <li>An A grade is forest interior covering more than 11.5% of a watershed.</li> </ul>	9.0%	9.0%	B	D (3.2%)
<b>Streamside cover</b>	<ul style="list-style-type: none"> <li>Streamside cover is the percentage of the 30-metre area on both sides of open streams that is forested.</li> <li>An A grade is forest covering more than 57.5% of this streamside area.</li> </ul>	N/A	63.4%	A	C (32.7%)



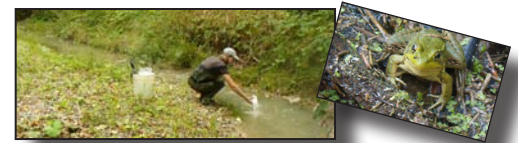
## Wetland Cover



Indicator	Description	Result		2012 Grade	
		2007	2012	Bayfield North	Entire ABCA Area
<ul style="list-style-type: none"> <li>Wetland cover is the percentage of a watershed that is covered by wetlands.*</li> <li>An A grade is wetlands covering over 11.5% of a watershed.</li> </ul>	N/A	2.9%	D	F (2.4%)	



## Surface Water Quality



Indicator	Description	Result		2012 Grade	
		2007	2012	Bayfield North	Entire ABCA Area
<b>Total phosphorus</b>	<ul style="list-style-type: none"> <li>Total phosphorus is a nutrient that enhances plant growth and contributes to excess algae and low oxygen in streams.</li> <li>An A grade is a 75th-percentile* total phosphorus concentration of less than 0.020 mg/L.</li> </ul>	N/A	0.035 mg/L	C	D (0.073)
<b>E. coli (Escherichia coli)</b>	<ul style="list-style-type: none"> <li>E. coli are bacteria found in human and animal waste. Their presence indicates water may contain other disease-causing organisms.</li> <li>An A grade is a geometric-mean* E. coli concentration of no more than 30 colony forming units (cfu) per 100 mL.</li> </ul>	N/A	177 cfu/100 mL	C	C (113)
<b>Benthic invertebrates</b>	<ul style="list-style-type: none"> <li>Benthic invertebrates are small animals, without backbones, that live in stream sediments.</li> <li>A Family Biotic Index (FBI) summarizes the numbers and types of these animals in a sediment sample. Values reflect stream health, ranging from 1 (healthy) to 10 (degraded).</li> <li>An A grade is an average FBI value of no more than 4.25.</li> </ul>	N/A	5.26	C	C (5.51)

\* See the complete *Watershed Report Card* at [abca.on.ca](http://abca.on.ca) for definitions of wetlands, 75th percentile, and geometric mean.





# Next Steps



## Thumbs up!

The Ontario Ministry of Agriculture and Food has helped local farmers to control soil erosion with the installation of berms. It has also helped to support important watershed evaluation research.

*This is just one example in the watershed. Let us know about projects you and your community are doing.*

## Grants

*Funding may be available to help you plant trees, control erosion, and improve water quality.*

## How can you help between now and the next Watershed Report Card?

### You can ...

- Protect existing woodlots and encourage regeneration of forests affected by forest pests.
- Have your septic system inspected, pumped out, and – if needed – upgraded.
- Contact us to see how you can preserve topsoil and limit erosion and runoff.
- Increase forest cover in the headwater areas of these lakeshore tributaries.

### Your community can ...

- Direct development away from areas of provincial, regional, and local significance.
- Support actions from individual property plans as recommended by the Management Plan for the Bayfield North Watersheds (North Gullies).

### Local agencies can ...

- Continue to monitor best management practices (BMPs) completed in this area. Ongoing evaluation of BMPs at the field and watershed levels helps us to understand their effectiveness.



**Take Action!** Develop an individual action plan for your property – call us to find out how.

## Links to the Great Lakes

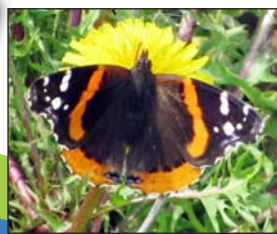
No matter where you live in the watershed, you are linked to the Great Lakes.

The local actions you take make a difference for Lake Huron.

Visit [lakehuroncommunityaction.ca](http://lakehuroncommunityaction.ca)



Visit [abca.on.ca](http://abca.on.ca) for the complete **Watershed Report Card** for all Ausable Bayfield watersheds.



Ausable Bayfield Conservation Authority (ABCA)  
 71108 Morrison Line, RR 3 Exeter, ON • N0M 1S5  
 Phone: 519-235-2610  
 Toll-free: 1-888-286-2610  
 Facsimile: 519-235-1963  
 E-mail: [info@abca.on.ca](mailto:info@abca.on.ca)  
 Website: [abca.on.ca](http://abca.on.ca)

