

South Gullies

Watershed Report Card 2023

A watershed is an area of land that drains rain and snow into creeks, streams and rivers. The watershed in which you live provides your link to the natural world. Watersheds connect our actions and accumulate to degrade or improve conditions.

GRADING

A Excellent

B Good

C Fair

D Poor

F Very Poor



FOREST CONDITIONS

GRADE

D



SURFACE WATER QUALITY

GRADE

C

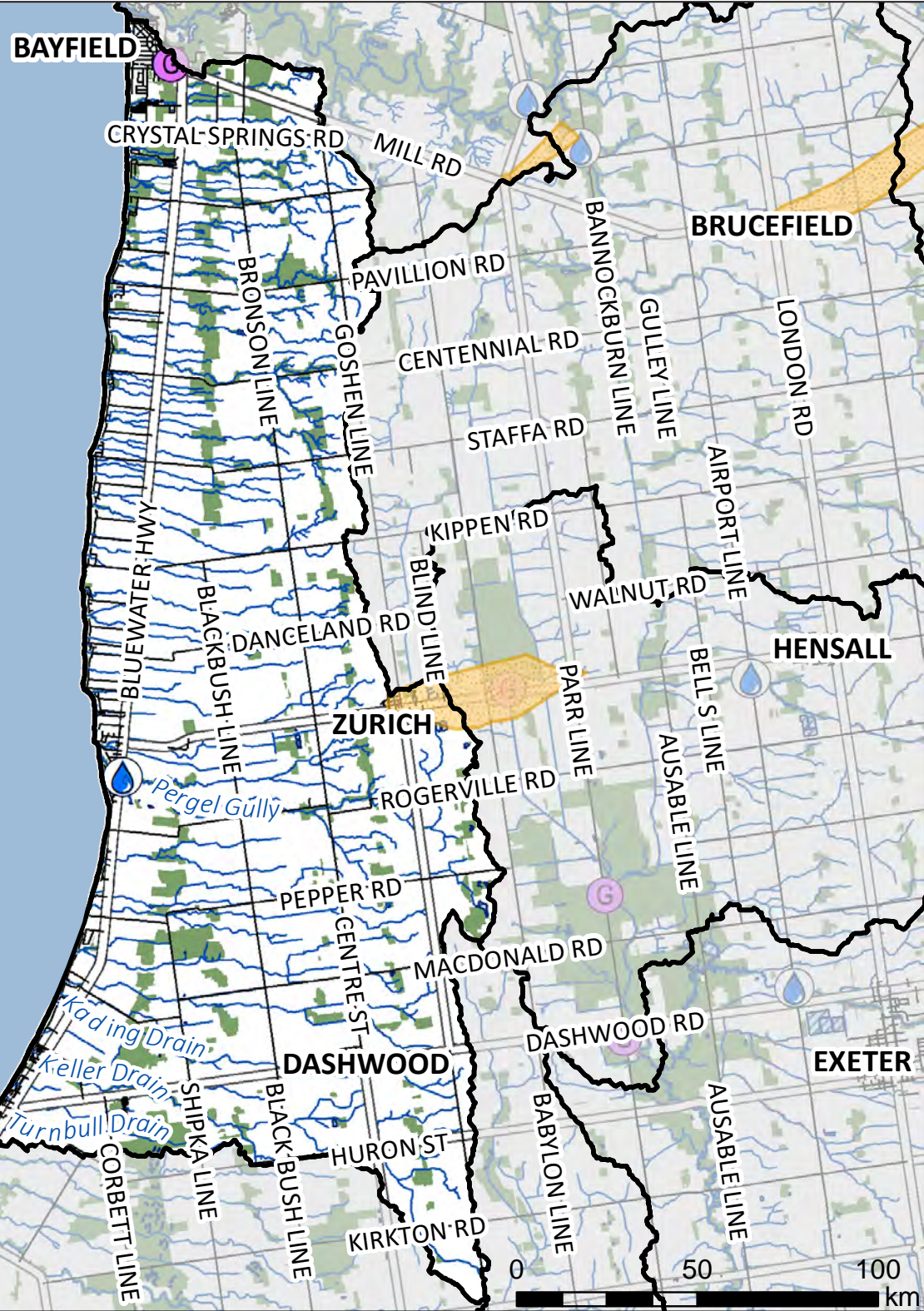
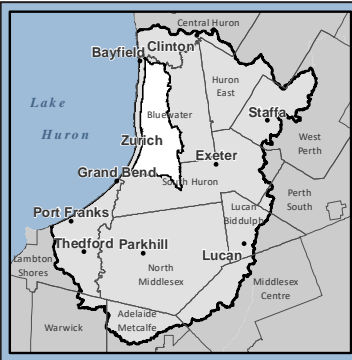


Thumbs Up!

To improve forest conditions and surface water quality, more than 600 trees have been planted along Bayfield streets and closed road allowances by the **Bayfield Tree Project**. This has been achieved by donations, volunteer efforts and help from the **Municipality of Bluewater**. The Bayfield Tree Project recognized a new opportunity to add to Bayfield's tree cover by planting trees along a gully just south of the Fawn Creek Lane development. Although there was no requirement for these trees to be planted by any municipal condition of development, these homeowners saw the value in adding trees to their properties.

Report cards give residents information to protect and enhance their watershed.

SOUTH GULLIES WATERSHED



- N
- Natural feature
- Surface water monitoring station
- Wellhead protection area
- Water body
- Groundwater monitoring station
- Watershed boundary

Municipalities: Bluewater, South Huron Area: 199 sq. km

This map has been compiled from various sources and is for information purposes only. The ABCA takes no responsibility for, nor guarantees, the accuracy of all the information contained in the map. Copyright King's Printer, 2023.

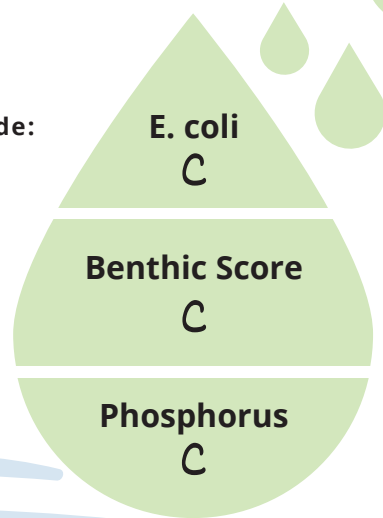
 **SURFACE WATER**

C

The complete report card, including an explanation of calculations and historic data, can be found at abca.ca/watershedreportcard.

Grade:

- A
- B
- C
- D
- F



E. coli was 151 cfu/100 mL. *E. coli* are bacteria that may indicate contaminated water. An A is 30 cfu/100 mL or less. The recreational guideline is 200 cfu/100 mL or less.

Benthic Score was 5.20. Benthic invertebrates are small animals that live in stream sediments. This score summarizes their numbers and types in a sample to rate stream health from healthy (1) to poor (10).

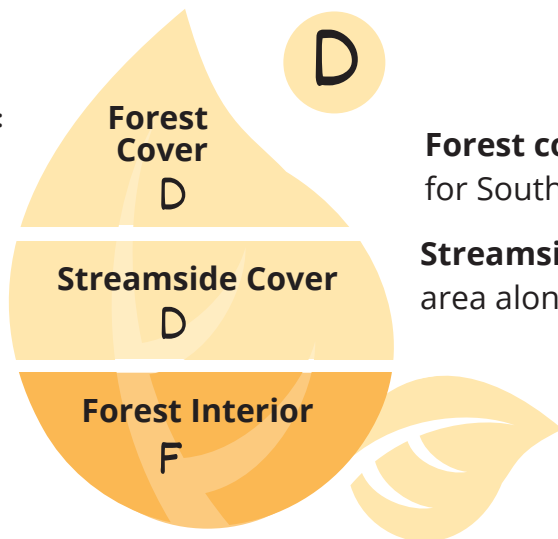
Total phosphorus was 0.036 mg/L. High phosphorus concentrations can lead to excess algae and low oxygen in streams. An A grade is 0.020 mg/L or less.

 **FOREST CONDITIONS**

D

Grade:

- A
- B
- C
- D
- F



Forest cover was 11.7%. The Environment Canada guideline for Southern Ontario is 30%. An A grade is 35% or greater.

Streamside cover was 24.2%. This is the percentage of 30-m area along streams that is forested. An A is 57.5% or greater.

Forest interior was 2.1%. This is the percentage of forest at least 100 m from the forest edge. Interior forest is required as breeding habitat for some bird species. An A grade is 11.5% or greater.

 **GROUNDWATER**

Chloride: A
Nitrate: A

Groundwater from wells is the municipal drinking water source in Brucefield, Clinton, Seaforth, Varna, and Zurich. Your drinking water quality may be different from monitoring wells.



OVERWINTER VEGETATION

on Agricultural Land

23 - 25% of farmland had wheat, forages, or hay as winter groundcover. At least 30% overwinter cover is expected if in a corn-soy-wheat rotation. Overwinter cover helps prevent soil erosion. Agriculture covers 78% of the land in this watershed.



WETLANDS

F

1.1% of the area in this watershed is wetland. Wetlands improve water quality, reduce flood risk, and provide habitat. An A grade is 11.5% or greater.

How can you help?

You can:

- Take positive actions on your property – consider native plants on slopes, and inspect and pump out your septic system every 3-5 years.

Your community can:

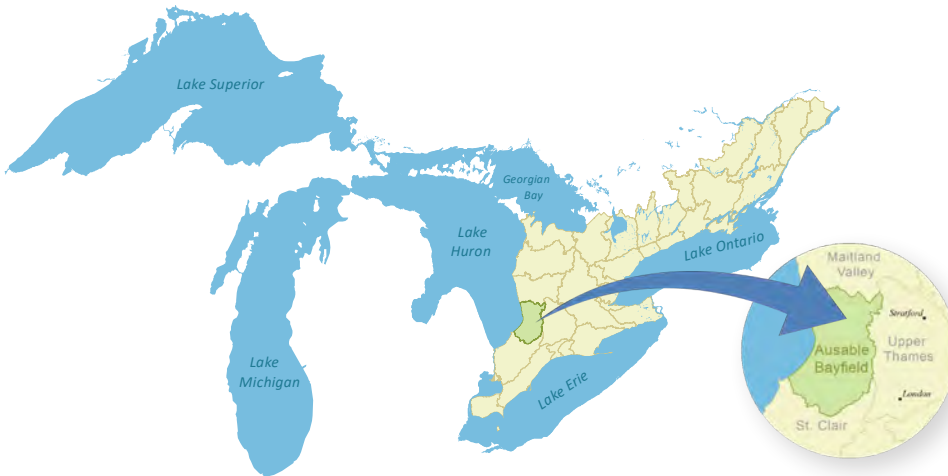
- Get involved in local water quality monitoring initiatives. Call us to find out more about how to get involved in your community.

Local agencies can:

- Assess tributaries to determine those most prone to erosion and identify stormwater retention options.

TOP ACTION:

To improve forest conditions and protect erodible land, plant native shrubs and trees.



Links to the Great Lakes

No matter where you live in the watershed, you are linked to the Great Lakes.

We rely on the lake as a source of drinking water, economic activity, and recreation.

Your personal actions, whether you live in a town or in the country, can make a difference for Lake Huron.

Visit lakehuroncommunityaction.ca

Ausable Bayfield Conservation

71108 Morrison Line, RR 3 Exeter, ON N0M 1S5

E-mail: info@abca.ca | Website: abca.ca

Phone: 519-235-2610 | Fax: 519-235-1963 | Toll-free: 1-888-286-2610

