

Mud Creek

Watershed Report Card 2023

A watershed is an area of land that drains rain and snow into creeks, streams and rivers. The watershed in which you live provides your link to the natural world. Watersheds connect our actions and accumulate to degrade or improve conditions.

GRADING

A Excellent

B Good

C Fair

D Poor

F Very Poor



FOREST CONDITIONS

GRADE

C



SURFACE WATER QUALITY

GRADE

D



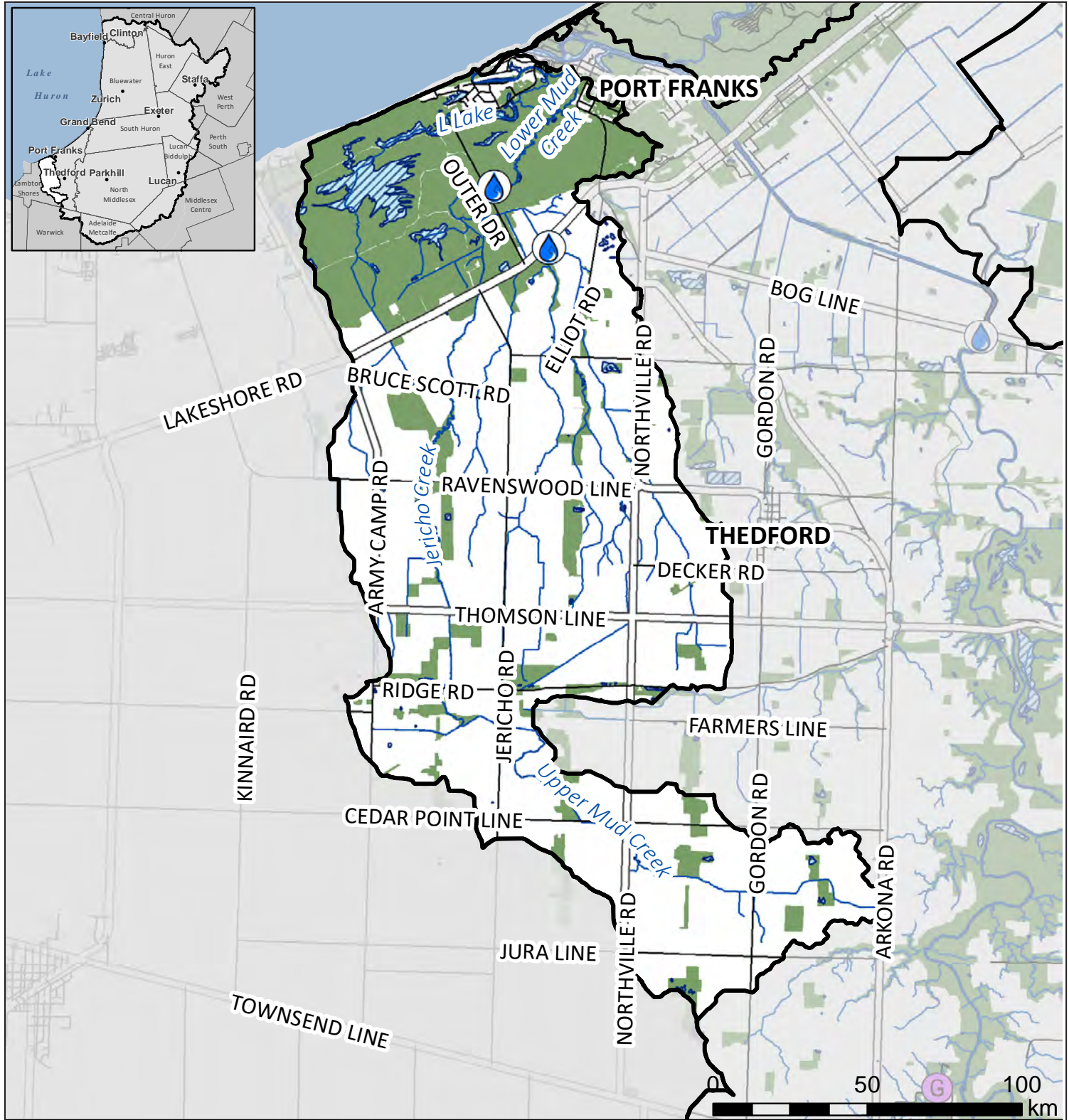
Thumbs Up!

To improve surface water quality and restore native wetland habitat, more than five hectares of invasive *Phragmites* was controlled thanks to support from the **Green Shovels Collaborative, the community of Port Franks, Municipality of Lambton Shores, Lambton Shores Phragmites Community Group, Nature Conservancy of Canada, and Ausable Bayfield Conservation Authority.**

Removing *Phragmites*, as shown above, is essential to protecting and enhancing coastal wetlands and shorelines, which provide homes for many birds, fish, turtles and native plants. With unrestricted growth, *Phragmites* can alter the ecological function of these natural areas and limit recreational opportunities.

Report cards give residents information to protect and enhance their watershed.

MUD CREEK WATERSHED



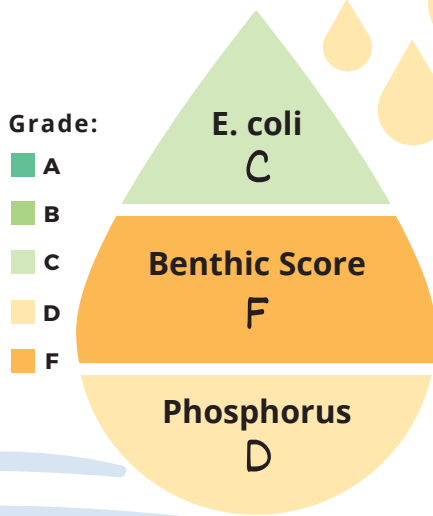
- Natural feature
- Water body
- Surface water monitoring station
- Groundwater monitoring station
- Wellhead protection area
- Watershed boundary

Municipalities: Lambton Shores

Area: 69 sq. km

This map has been compiled from various sources and is for information purposes only. The ABCA takes no responsibility for, nor guarantees, the accuracy of all the information contained in the map. Copyright King's Printer, 2023.

 **SURFACE WATER**



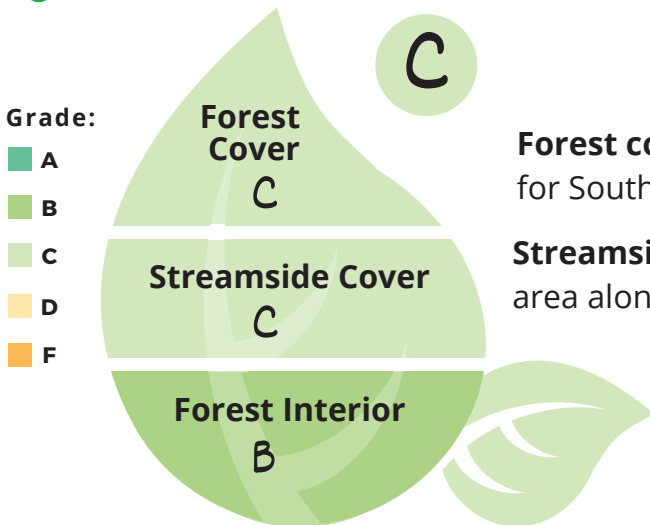
The complete report card, including an explanation of calculations and historic data, can be found at abca.ca/watershedreportcard.

E. coli was 214 cfu/100 mL. *E. coli* are bacteria that may indicate contaminated water. An A is 30 cfu/100 mL or less. The recreational guideline is 200 cfu/100 mL or less.

Benthic Score was 6.80. Benthic invertebrates are small animals that live in stream sediments. This score summarizes their numbers and types in a sample to rate stream health from healthy (1) to poor (10).

Total phosphorus was 0.148 mg/L. High phosphorus concentrations can lead to excess algae and low oxygen in streams. An A is 0.020 mg/L or less.

 **FOREST CONDITIONS**



Forest cover was 24.3%. The Environment Canada guideline for Southern Ontario is 30%. An A is 35% or greater.

Streamside cover was 33.8%. This is the percentage of 30-m area along streams that is forested. An A is 57.5% or greater.

Forest interior was 10.7%. This is the percentage of forest at least 100 m from the forest edge. Interior forest is required as breeding habitat for some bird species. An A is 11.5% or greater.

 **GROUNDWATER**

Chloride: Less than A
Nitrate: A

Groundwater from wells is the municipal drinking water source in Brucefield, Clinton, Seaforth, Varna, and Zurich. Your drinking water quality may be different from monitoring wells.

 **OVERWINTER VEGETATION**
on Agricultural Land

15 - 25% of farmland had wheat, forages, or hay as winter groundcover. At least 30% overwinter cover is expected if in a corn-soy-wheat rotation. Overwinter cover helps prevent soil erosion. Agriculture covers 65% of the land in this watershed.

 **WETLANDS** 

3.9% of the area in this watershed is wetland. Wetlands improve water quality, reduce flood risk, and provide habitat. An A grade is 11.5% or greater.

How can you help?

You can:

- Take part in the community-based turtle monitoring program or the Volunteer Rain Gauge Network.

Your community can:

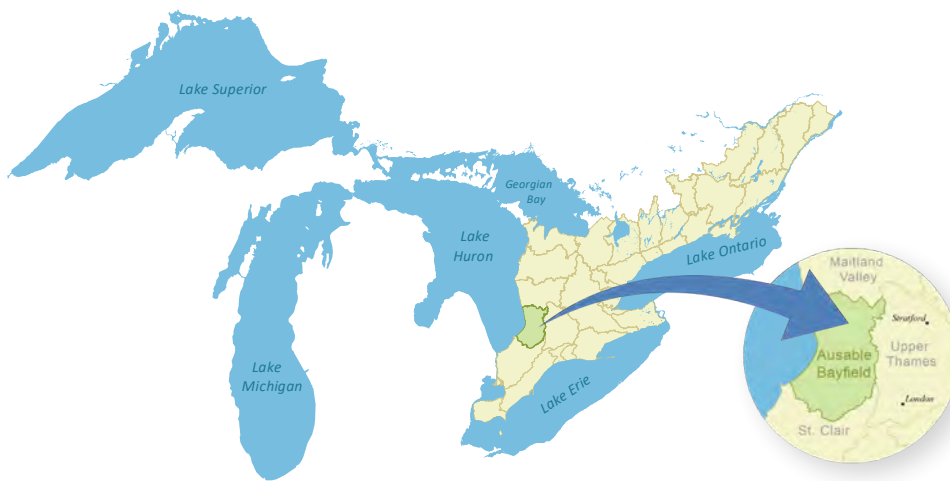
- Appreciate that sand may build up along the shore when lake levels are low. These dunes protect your homes and cottages if lake levels rise. Work around dunes may require a permit – check with Ausable Bayfield Conservation for more information.

Local agencies can:

- Support water quality monitoring at local beaches.

TOP ACTION:

To improve forest conditions and water quality, plant native trees and shrubs along streamsides.



Links to the Great Lakes

No matter where you live in the watershed, you are linked to the Great Lakes.

We rely on the lake as a source of drinking water, economic activity, and recreation.

Your personal actions, whether you live in a town or in the country, can make a difference for Lake Huron.

Visit lakehuroncommunityaction.ca

Ausable Bayfield Conservation

71108 Morrison Line, RR 3 Exeter, ON N0M 1S5

E-mail: info@abca.ca | Website: abca.ca

Phone: 519-235-2610 | Fax: 519-235-1963 | Toll-free: 1-888-286-2610

