

Main Bayfield

Watershed Report Card 2023

A watershed is an area of land that drains rain and snow into creeks, streams and rivers. The watershed in which you live provides your link to the natural world. Watersheds connect our actions and accumulate to degrade or improve conditions.

GRADING

A Excellent

B Good

C Fair

D Poor

F Very Poor



FOREST CONDITIONS

GRADE

C



SURFACE WATER QUALITY

GRADE

B



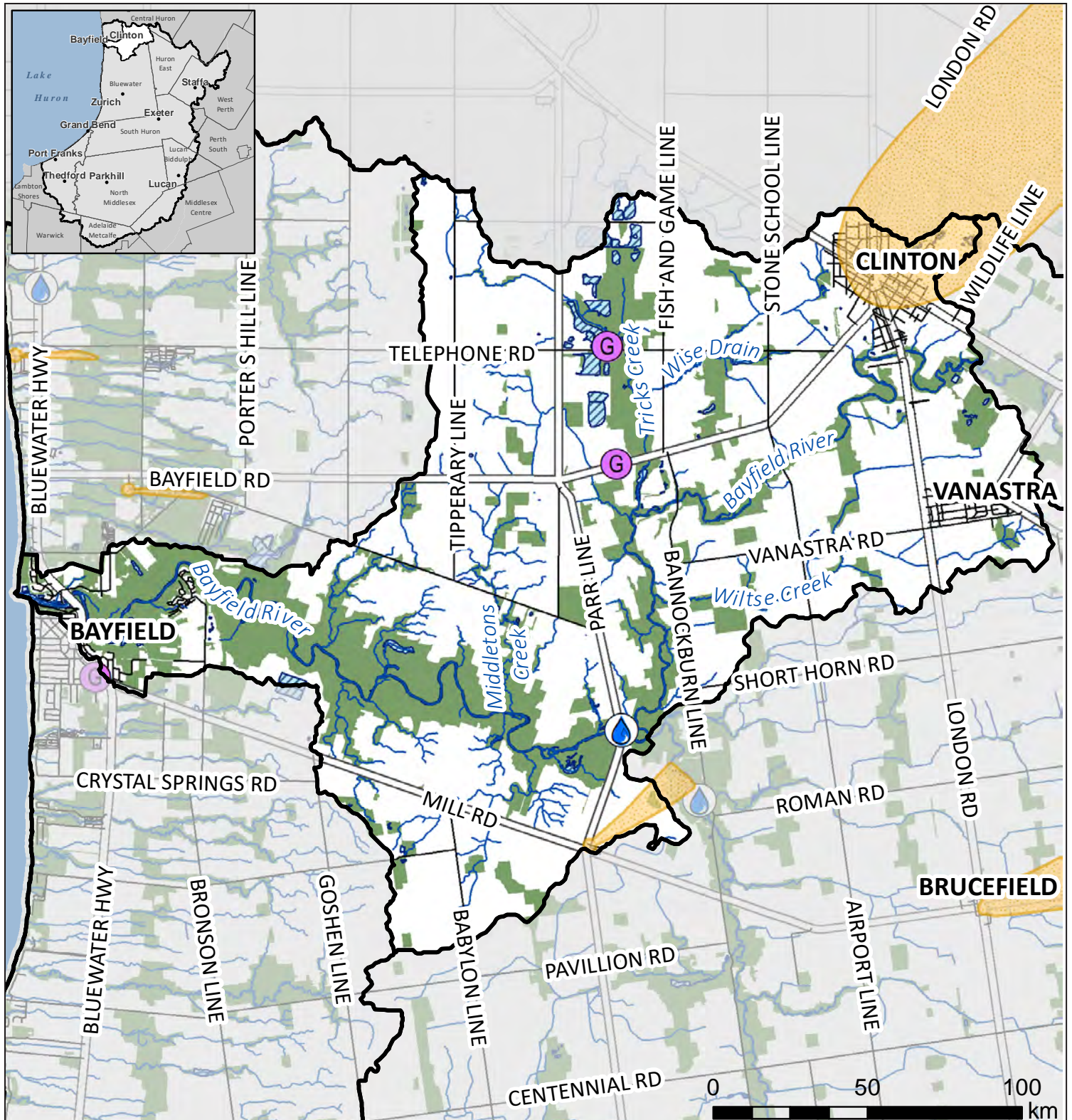
Thumbs Up!

To improve surface water quality, the **Huron County Demonstration Farm at Huronview** (shown above) is one of several sites in Ontario where agricultural producers are coming together with other groups to demonstrate practices that produce bountiful crops while improving soil health and protecting the environment.

At Huronview farm, Huron County Soil and Crop Improvement Association, Ausable Bayfield Conservation Authority, Huron County, industry, and other partners are demonstrating and experimenting with innovative types of drainage, to see the effects on crop yield, soil health, and water quality.

Report cards give residents information to protect and enhance their watershed.

MAIN BAYFIELD WATERSHED



N	Natural feature	Surface water monitoring station	Wellhead protection area
	Water body	Groundwater monitoring station	Watershed boundary

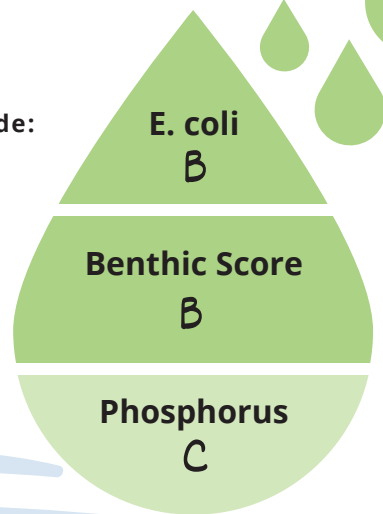
Municipalities: Huron East, Bluewater, Central Huron Area: 92 sq. km

This map has been compiled from various sources and is for information purposes only. The ABCA takes no responsibility for, nor guarantees, the accuracy of all the information contained in the map. Copyright King's Printer, 2023.

 **SURFACE WATER**

Grade:

- A
- B
- C
- D
- F



The complete report card, including an explanation of calculations and historic data, can be found at abca.ca/watershedreportcard.

E. coli was 88 cfu/100 mL. *E. coli* are bacteria that may indicate contaminated water. An A is 30 cfu/100 mL or less. The recreational guideline is 200 cfu/100 mL or less.

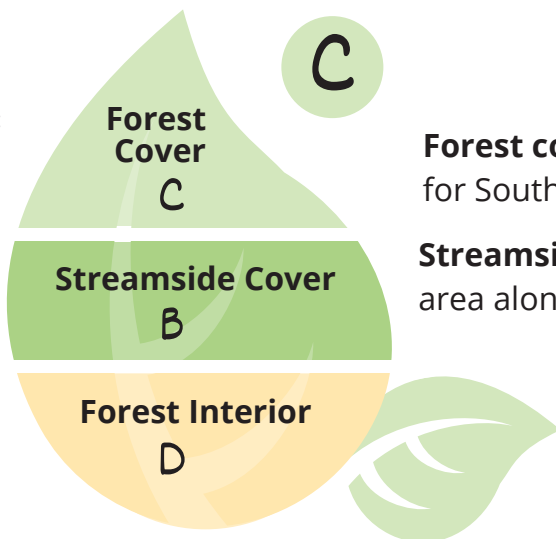
Benthic Score was 4.80. Benthic invertebrates are small animals that live in stream sediments. This score summarizes their numbers and types in a sample to rate stream health from healthy (1) to poor (10).

Total phosphorus was 0.049 mg/L. High phosphorus concentrations can lead to excess algae and low oxygen in streams. An A is 0.020 mg/L or less.

 **FOREST CONDITIONS**

Grade:

- A
- B
- C
- D
- F



Forest cover was 22.9%. The Environment Canada guideline for Southern Ontario is 30%. An A is 35% or greater.

Streamside cover was 54.8%. This is the percentage of 30-m area along streams that is forested. An A is 57.5% or greater.

Forest interior was 4.7%. This is the percentage of forest at least 100 m from the forest edge. Interior forest is required as breeding habitat for some bird species. An A is 11.5% or greater.

 **GROUNDWATER**

Chloride: A

Nitrate: Less than A

Groundwater from wells is the municipal drinking water source in Brucefield, Clinton, Seaforth, Varna, and Zurich. Your drinking water quality may be different from monitoring wells.

 **OVERWINTER VEGETATION on Agricultural Land**

27 - 33% of farmland had wheat, forages, or hay as winter groundcover. At least 30% overwinter cover is expected if in a corn-soy-wheat rotation. Overwinter cover helps prevent soil erosion. Agriculture covers 62% of the land in this watershed.

 **WETLANDS** D

2.7% of the area in this watershed is wetland. Wetlands improve water quality, reduce flood risk, and provide habitat. An A grade is 11.5% or greater.

How can you help?

You can:

- Connect small woodlots to the forest in the Bayfield River Valley.

Your community can:

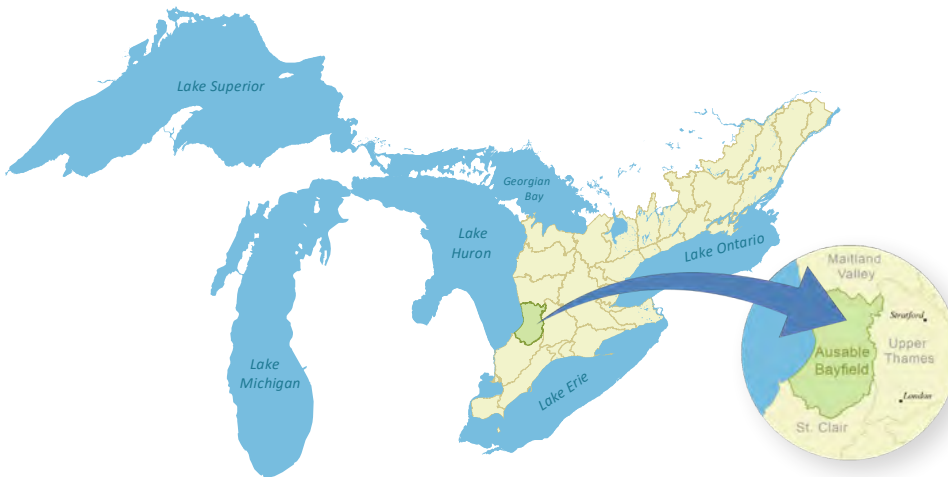
- Support work to attain a Blue Flag designation for the Bayfield Pier Beach.

Local agencies can:

- Analyze long-term temperature data for Trick's Creek, which provides cold-water fish habitat.

TOP ACTION:

To improve water quality and habitat, plant cover crops, reduce tillage and rotate crops



Links to the Great Lakes

No matter where you live in the watershed, you are linked to the Great Lakes.

We rely on the lake as a source of drinking water, economic activity, and recreation.

Your personal actions, whether you live in a town or in the country, can make a difference for Lake Huron.

Visit lakehuroncommunityaction.ca

Ausable Bayfield Conservation

71108 Morrison Line, RR 3 Exeter, ON N0M 1S5

E-mail: info@abca.ca | Website: abca.ca

Phone: 519-235-2610 | Fax: 519-235-1963 | Toll-free: 1-888-286-2610

